

## Application

The EJ-245 extruded aluminum louver is designed for intake and exhaust application where protection against water infiltration is not critical. The EJ-245 is well suited for special shape applications and is available with hidden mullions for a continuous blade appearance of multiple section assemblies. The EJ-245 is available in a wide array of anodized and painted finishes including custom color matching.

## Standard Construction

- Material:** Mill finish 6063-T5 extruded aluminum.
- Frame:** 2" deep × 0.060" thick (51 × 1.5) channel.
- Blades:** 45° × 0.060" (1.5) thick J-style.
- Screen:** 1/2" × 0.063" (12.7 × 1.6) expanded and flattened aluminum.
- Mullion:** Visible.
- Minimum Size:** 4.5" × 5" (114 × 127)
- Maximum Size:** Single section: 60" × 120" (1524 × 3048)  
120" × 60" (3048 × 1524)  
Multiple section: Unlimited

## Options

- Factory finish:
  - High Performance Fluoropolymer - 100% resin Newlar®/ 70% resin Kynar®
  - Baked Enamel
  - Clear or Color Anodized, Class 1
  - Prime Coat
- Hidden vertical mullion for continuous blade appearance.
- 1 1/2" (38) flange frame.
- Welded construction.
- Alternate bird or insect screens.
- Insulated or non-insulated blank-off panels.
- Filter racks.
- Hinged frame.
- Head and/or sill flashing.

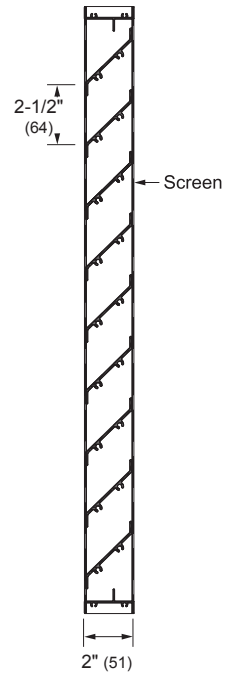
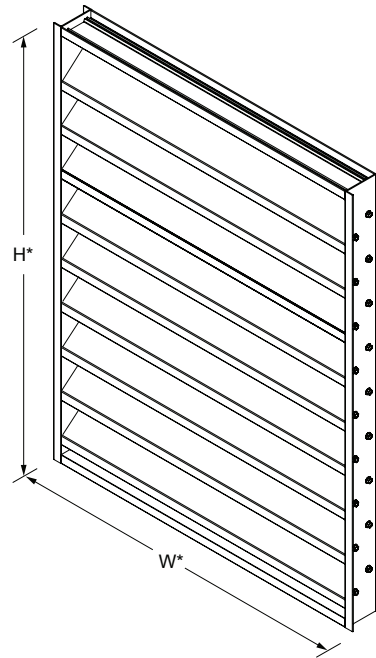
## Ratings

**Free Area:** [48" × 48" (1222 × 1222) unit]: 7.5 ft<sup>2</sup> (0.70 m<sup>2</sup>)  
46.9%

### Performance @ Beginning Point of Water Penetration

**Free Area Velocity:** 383 fpm (2.97 m/s)  
**Air Volume Delivered:** 4,373 cfm (2.08 m<sup>3</sup>/s)  
**Pressure Loss:** 0.06 in.wg. (15 Pa)

**Design Load:** 20 psf

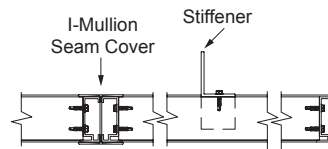


**Model EJ-245**  
(standard)

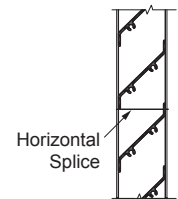
\*Louver dimensions furnished approximately 1/2" (13) undersize.

**Vertical Section**

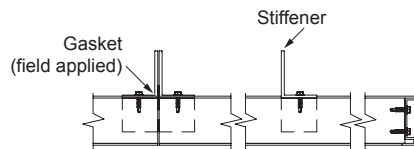
†Screen adds approximately 3/16" (5) to louver depth.



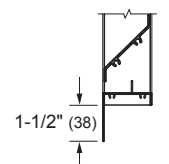
**Visible Vertical Mullion**  
(standard)



**Horizontal Mullion**  
(standard)



**Hidden Vertical Mullion**  
(optional)



**Flange Frame**  
(optional)